

Rectifier SCR

Type: SJT 220V/48V - 40A - RECT

Overview

Fungsi : pengisi battery dan supply beban kontinyu.

Spesifikasi

Half Bridge Thyristor Controlled (SCR)

Capacity:

Voltage : 12V, 24V, 48V, 110V, 220V
Current : 12,5 A, 25 A, 40 A, 60 A, 80 A

Input Voltage

1 Phase : 220VAC, 50 HZ
3 Phase : 380VAC, 50 HZ
Fluctuation Voltage : 15%

Output Voltage

System Adjustable : Floating, Equalizing, Boosting
Voltage Regulation : < 1 %
Ripple Voltage : < 3 %

Protection System

Input : AC input high protection
: AC input low protection
: Surge voltage protection
: Short circuit protection by MCB
: Phase failed

Output : Over voltage output protection
: Low voltage battery protection
: Over load protection adjustable 70 – 100%
: Over charge protection adjustable 10–50%
: Ground fault positive protection
: Ground fault negative protection
: Over temperature protection

Monitoring System

Voltage : Rectifier voltage input, Rectifier voltage output
Current : Rectifier current output , Battery current
Alarm & Indicator : Float, Equal, Boost, DC output rectifier, AC input high
: AC input low, Over voltage output
: Low voltage battery, Overload, Over charge
: Over temperature, Ground fault positive
: Ground fault negative, Rectifier fault :

Other Features

: Alarm remote, Automation fan
: Endurance test, Automation equal to float
: Buzzer failure, Modular system

Rectifier Switch Mode

Type: SJT 220V/12V-3A-PSM



Overview

Fungsi : mengisi battery dan mensupply beban secara kontinyu

Spesifikasi

Capacity:

Voltage : 12V, 24V, 48V, 110V
Current : 3 A, 6 A, 9 A, 12 A, 15 A, 30 A

Input Voltage

1 Phase : 220VAC, 50 HZ
Fluctuation Voltage : 20%

Output Voltage

System 48 V Adjustable	: Floating	42 V – 59 V
	: Equalizing	48 V – 62 V
	: Boosting	50 V – 70 V
System 110 V Adjustable	: Floating	85 V – 135 V
	: Equalizing	90 V – 160 V
	: Boosting	95 V – 175 V

Voltage Regulation : < 1 %
Ripple Voltage : < 2 %

Protection System

Input : AC input high protection
: AC input low protection
: Surge voltage protection
: Short circuit protection by MCB

Output : Over voltage output protection

- : Low voltage battery protection
- : Over load protection adjustable 70 – 100%
- : Over charge protection adjustable 10–50%
- : Ground fault positive protection
- : Ground fault negative protection

Monitoring System

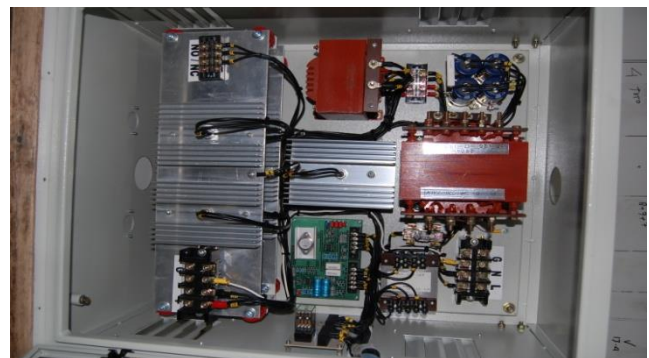
- Voltage : Rectifier voltage output
- Current : Rectifier current output
- Alarm & Indicator : Float
- : Equal
- : Boost
- : DC output rectifier
- : AC input high
- : AC input low
- : Over voltage output
- : Low voltage battery
- : Overload, Over charge, Over temperature
- : Ground fault positive
- : Ground fault negative
- : Rectifier fault

Other Features

- : Alarm remote
- : Endurance test
- : Automation equal to float
- : Buzzer failure

Charger SCR Portable

Type: SJT 220V/24V – 20A – PORT



Overview

Fungsi : pengisian battery dengan system tegangan stabil dan pembatas arus

Spesifikasi

Half Bridge Thyristor Controlled (SCR)

Capacity:

- Voltage : 6V, 12V, 24V, 48V, 110V
- Current : 5 A, 10 A, 15 A, 20 A, 30 A, 40A

Input Voltage

1 Phase : 220VAC, 50 HZ/60 HZ
3 Phase : 380VAC, 50 HZ/60 HZ
Fluctuation Voltage : 15%

Output Voltage

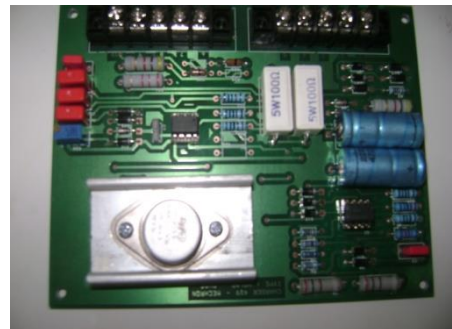
All system voltage : Floating
: Equalizing

Ripple voltage : < 5%

Protection system : Over voltage
: Over load

DC to DC Converter

Type: SJT 24V/12V-5A-DCS



Overview

Fungsi : menurunkan atau menaikkan tegangan DC

Spesifikasi

Capacity:

Voltage : 110V to 48V
: 110V to 24V
: 110V to 12V
: 48V to 24V
: 48V to 12V
: 48V to 6V
Current : 1A, 2A, 5A, 10A, 15A, 20A, 25A

Protection system

Input : MOV (over voltage input), Fuse
Output : Overload protection
: Over voltage
: Low voltage

Monitoring System

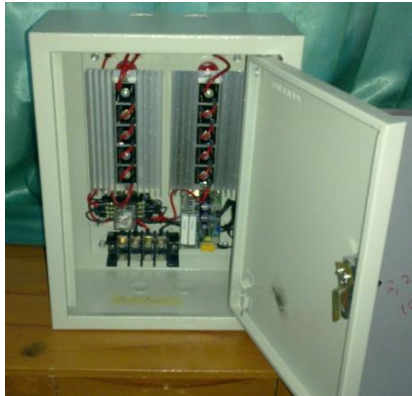
Indikator : ON, Failed

Voltmeter

Amperemeter

Dropper

Type: ---



Overview

Fungsi : penurun tegangan saat rectifier bekerja pada mode operasi equal dan boosting.

Spesifikasi:

1. Tegangan Masukkan : 110 Vdc – 135 Vdc

2. Tegangan Keluaran:

Diatur sesuai penggunaan	Charger	Droper
Terhubung langsung :	130 Vdc	130 Vdc
- Relay ON :	123 Vdc	115 Vdc
- Relay OFF :	130 Vdc	115 Vdc

3. Kapasitas Arus Keluaran : 10 Ampere.

4. Sistem Pendingin : Alami tanpa blower / natural

DC POWER SUPPLY UNIT

Spesifikasi:

Input Voltage:

Input 1: AC Power Supply: 220 VAC, 50 Hz

Input 2: DC Power Supply: 36 – 72 VDC

Output: 48 VDC \pm 1%, 0.5 A, 24 Watts

Ripple content: < 1%

Audible noise: < 1.8 mV_{eff}

Output : Two parallel outputs

Isolation: Trafo Isolasi

Operating Indicator: LED

Ambient Temperature: 45⁰ c

Cooling: Natural, Blower

DUMMY LOAD

Spesifikasi:

Tegangan Discharge: 48 Vdc

Toleransi Tegangan: 10 %

Sumber Tegangan Utama: 220 VAC

Kapasitas: 250 A

Switch: MCB 10 A, MCB 20 A, Toggle Switch 5 A, Toggle Switch 1 A

Selectror: Manual

Display: Digital Volt Meter, Digital Ampere Meter

Stabilitas Arus: Otomatisasi arus stabil pada saat tegangan battery turun

Suhu Lingkungan: Max 60⁰

Bahan Box: Plat Besi / Aluminium

INVERTER

Spesifikasi:

Input:

- 12 Vdc
- 24 Vdc
- 48 Vdc

Output: Sinus 220 Vac, Stabil

Kapasitas:

- 250 W
- 500 W
- 750 W
- 1000 W

Proteksi:

Fuse Protection

Polarity Protection

Led Indicator Fail

Oprating Ambient Temperatur sampai 40°C

Konstruksi: Plat Easer / Cat Duco

Berat:

12 Kg

18 Kg

23 Kg

35 Kg

Pendinginan: Blower

Frequency: 50/60 Hz

VOLTAGE REGULATOR OTOMATIS

Spesifikasi:

Phase: 1 Phase, 3 Phase

Daya: 400 Watt – 2500 Watt

Input Voltage: 220 / 380 V

Output:

Voltage: 220 / 380

Frequency: 50 Hz

Arus: 11,3 A

Faktor daya kelebihan beban: 10 %

Insulasi: trafo

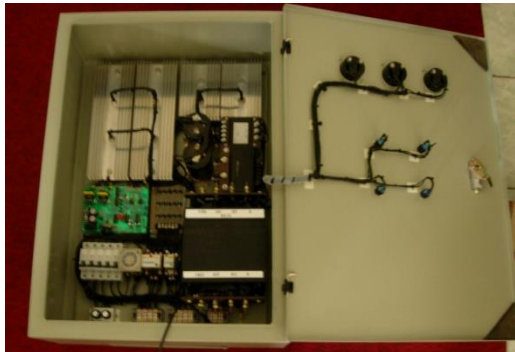
Konstruksi: tower

Weight: 40 kg

Dimension (L x W x H): 25 x 25 x 60 cm

CHARGER 110 VDC/10 A

Type: SJT 220VAC/110VDC-10A-CHR



Spesifikasi

Charger Type / Part Nr.	SJT 220VAC/110VDC-10A-CHR
Control Method	Half Bridge Thyristor Controlled
Input Voltage	<ul style="list-style-type: none">▪ Single Phase, 220 Vac (nominal)▪ Range : -15% / +15% (187 ~ 253 Vac)
Input Frequency	50/60 Hz (nominal) Range : $\pm 10\%$ (54 ~ 66 Hz)
Output Voltage	110 Vdc (nominal)
Output Ripple Voltage	$\pm 3.5\%$ Vpp, without battery
Output Voltage Adjustment	<ul style="list-style-type: none">▪ Floating Adjustment: 90 ~ 130 Vdc▪ Equalizing Adjustment: 90 ~ 130 Vdc▪ Equalizing Timer : 12 Hours (max) for Equalizing in Automatic Mode
Output Current Capacity	10 Adc (max) / 1,1 kW

Output Current Limit Adjustment	Rectifier Current Limit Adjustment : 10 Adc
Diode dropper	10A (serial diode) Automatic bypass from equalizing to floating
Controller system Diode dropper & Auto equal to float	By relay methode
Protection	Over current protection MCB input protection(2 pole) MCB battery protection (1 pole) MCB load protection (1pole) MCB bypass (1pole)
Metering	Volt meter output / battery Volt meter load Ampere meter output DC